

# 承认书

## Specification for approval

客户名称:

CUSTOMER NAME: \_\_\_\_\_

经办者:

职称:

DIRECTOR: \_\_\_\_\_ TITLE: \_\_\_\_\_

客户料号:

CUSTOMER PART NO.: \_\_\_\_\_

品名:

版本:

PART NUMBER: E6X0602VGAC1UDA REVISION: 新

发件日期:

回文日期:

ISSUE DATE: 2013/03/27 RETURN DATE:  / /

一、谨致执事者：兹提供敝公司产品之有关详细规格及图面数据，  
敬请给予办理测试认定手续。

同时敬请送返一份附有贵公司签认之测试认定后之样品认定书。

We are please in sending you herewith our specification and drawings for your approval.

Please return to us one copy "For Approval" with your approved signatures.

二、附件:

ACCESSORY: 样品 出货检验记录表 封装尺寸图 电气特性曲线

内部线路图 焊性建议 PAD 建议 包装方式

三、客户意见栏 CUSTOMER'S PROPOSAL

AGREE 同意 (请于认可栏中签名)

DISAGREE 不同意

---

REASON 原因: \_\_\_\_\_

\_\_\_\_\_

客户认可签章:

CUSTOMER SIGNATURE: \_\_\_\_\_

**SMD CHIP LED LAMP**

# E6X0602VGAC1UDA GREEN

PRELIMINARY SPEC



**ATTENTION**  
OBSERVE PRECAUTIONS  
FOR HANDLING  
ELECTROSTATIC  
DISCHARGE  
SENSITIVE  
DEVICES

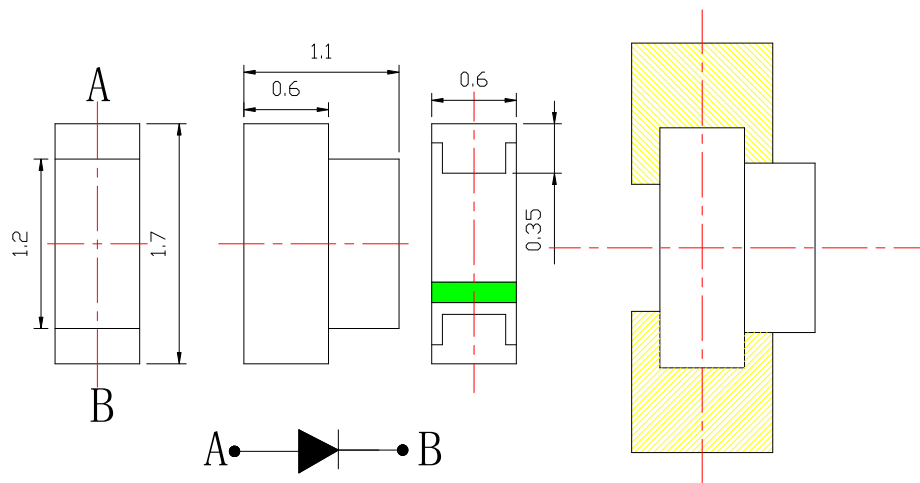
## Features

- \_1.7mmX0.6mm SMT LED, 1.1THICKNESS.
- \_LOW POWER CONSUMPTION.
- \_WIDE VIEWING ANGLE.
- \_IDEAL FOR BACKLIGHT AND INDICATOR.
- \_VARIOUS COLORS AND LENS TYPES AVAILABLE.
- \_PACKAGE: 2000PCS / REEL.
- \_RoHS COMPLIANT.

## Description

The GREEN source color devices are made with GaN on Sapphire Light Emitting Diode. Static electricity and surge damage the LEDs. It is recommended to use a wrist band or anti-electrostatic glove when handling the LEDs.

## Package Dimensions



---

Notes:

1. All dimensions are in millimeters (inches).
2. Tolerance is  $\pm 0.1(0.004")$  unless otherwise noted.
3. Specifications are subject to change without notice.

### Selection Guide

Part No.	Dice	Lens Type	Iv (mcd) @ 20mA		Viewing Angle
			Min.	Typ.	2 θ 1/2
E6X0602VGAC1UDA	GREEN (GaN)	WATER CLEAR	300	500	120

**Note:**

1. θ1/2 is the angle from optical centerline where the luminous intensity is 1/2 the optical centerline value.

### Electrical / Optical Characteristics at TA=25°C

Symbol	Parameter	Device	Typ.	Max.	Units	Test Conditions
λ <sub>peak</sub>	Peak Wavelength	GREEN	518	524	nm	IF=20mA
λ <sub>D</sub>	Dominant Wavelength	GREEN			nm	IF=20mA
Δλ <sub>1/2</sub>	Spectral Line Half-width	GREEN	25		nm	IF=20mA
C	Capacitance	GREEN	105		pF	VF=0V;f=1MHz
VF	Forward Voltage	GREEN	3.0	3.4	V	IF=20mA
IR	Reverse Current	GREEN		2	μA	VR = 7V

Remarks:

If special sorting is required (e.g. binning based on forward voltage, luminous intensity, or wavelength), the typical accuracy of the sorting process is as follows:

1. Wavelength: +/-1nm
2. Luminous Intensity: +/-15%
3. Forward Voltage: +/-0.1V

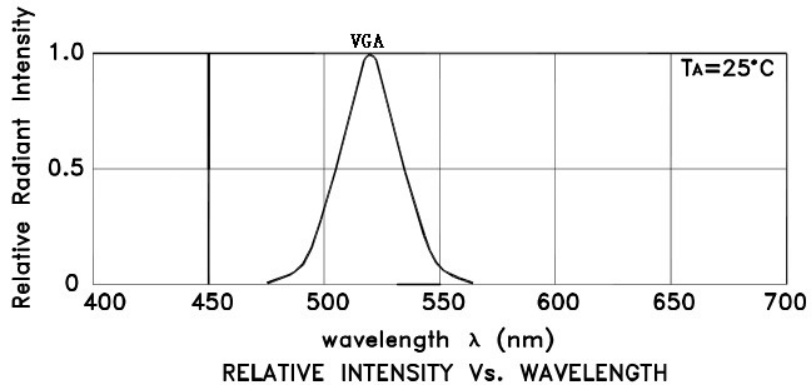
Note: Accuracy may depend on the sorting parameters

**Absolute Maximum Ratings at T<sub>A</sub>=25°C**

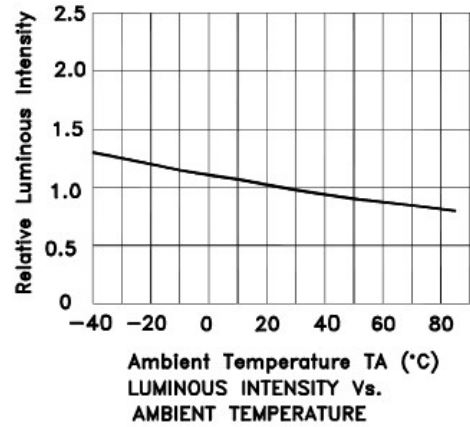
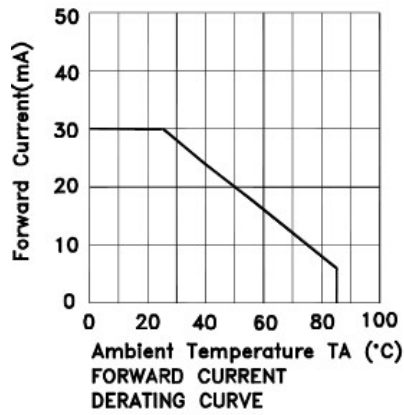
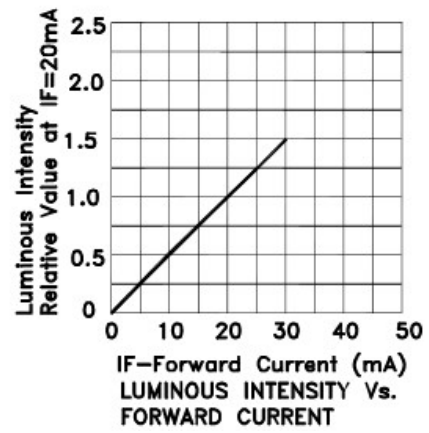
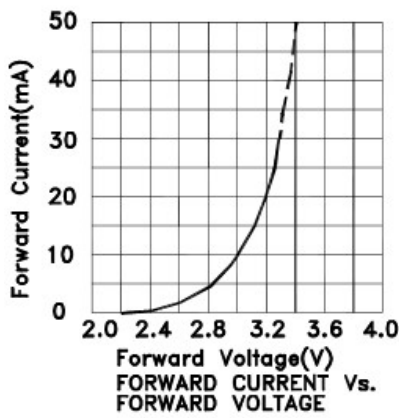
<b>Parameter</b>	<b>GREEN</b>	<b>Units</b>
<b>Power dissipation</b>	<b>135</b>	<b>mW</b>
<b>DC Forward Current</b>	<b>30</b>	<b>mA</b>
<b>Peak Forward Current [1]</b>	<b>140</b>	<b>mA</b>
<b>Reverse Voltage</b>	<b>5</b>	<b>V</b>
<b>Operating/Storage Temperature</b>	<b>-40°C To +85°C</b>	

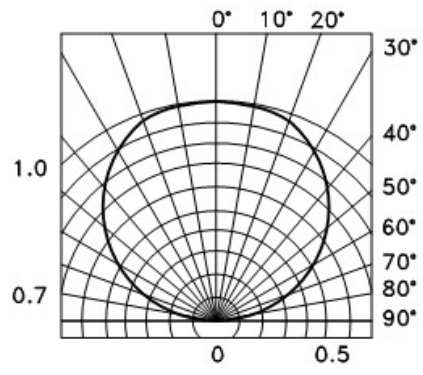
**Note:**

1. 1/10 Duty Cycle, 0.1ms Pulse Width.



**E6X0602VGAC1UDA GREEN**

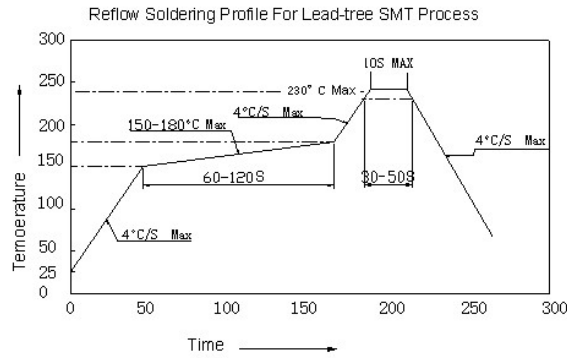




SPATIAL DISTRIBUTION



**E6X0602VGAC1UDA GREEN**

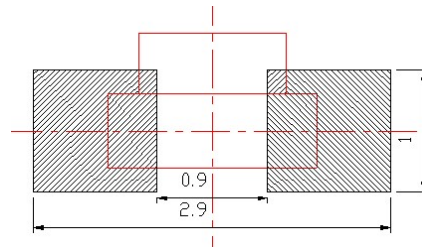


NOTES:

1. We recommend the reflow temperature 245° c(±5) The maximum soldering temperature should be limited to 260° c
2. Don't cause stress too the epoxy resin while it is exposed to high temperature.
3. Numbe of reflow process shall be 2 time or less.

**Recommended Soldering Pattern**

(Units : mm)

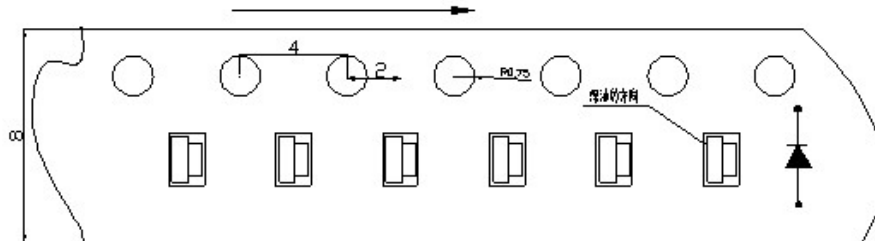


**Tape Specifications**

(Units : mm)

包装方式:

TAPE



Package: 2000PCS/reel

Remarks:

---

If special sorting is required (e.g. binning based on forward voltage, luminous intensity, or wavelength), the typical accuracy of the sorting process is as follows:

1. Wavelength:  $\pm 1\text{nm}$
2. Luminous Intensity:  $\pm 15\%$
3. Forward Voltage:  $\pm 0.1\text{V}$

Note: Accuracy may depend on the sorting parameters